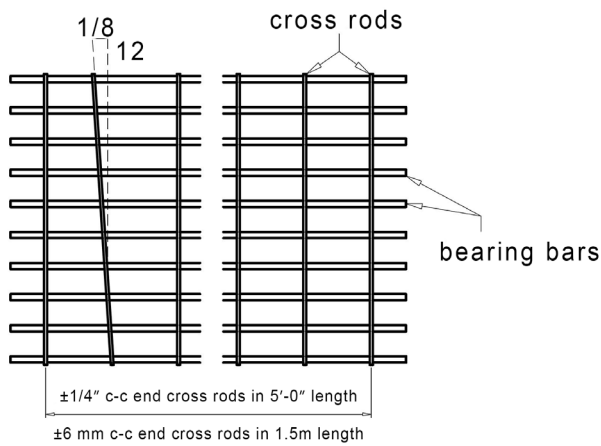
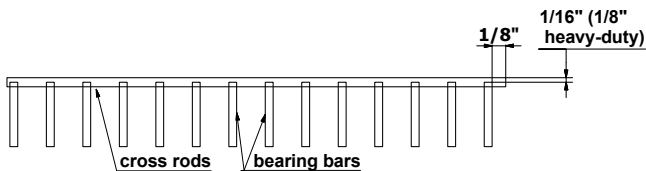


Bearing Bar & Cross Rod Tolerances

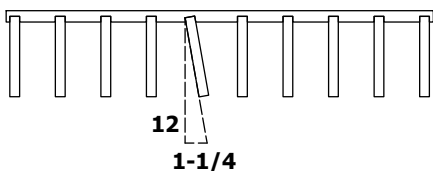
Cross Rod Spacing and Alignment. Cross rods should not vary more than 1/8 in 12 in either direction from perpendicular alignment with bearing bars. The tolerance of the cross bar spacing for 5'0" in length is $\pm 1/4"$.



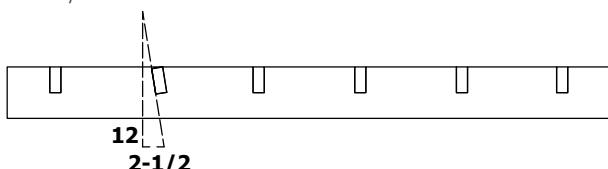
Cross rod Position. The top of cross rod should not project more than 1/16" above the top of the bearing bars for standard grating (1/8" for heavy duty) and should not extend more than 1/8" from side of bearing bars.



Bearing Bar Lean. Bearing bar lean must not exceed a slope of 1-1/4 to 12.

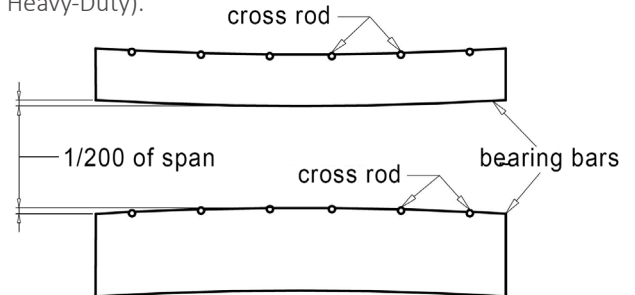


Cross Bar Lean. Cross bar lean must not exceed a slope of 2-1/2 to 12.

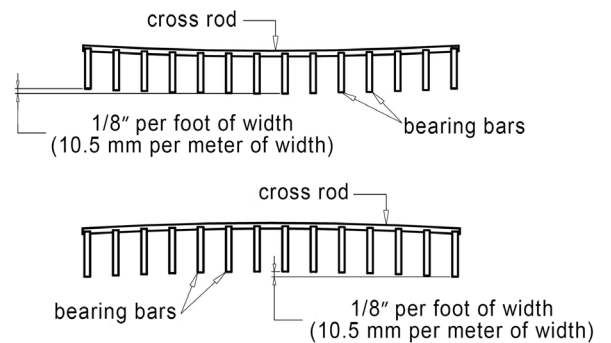


Panel Tolerance

Longitudinal Bow. Longitudinal bow should be less than 1/200 of the length for standard grating (1/240 for Heavy-Duty).



Transverse Bow. Before banding, the transverse bow should be less than 1/8" per foot of width.



Overall Dimensions and Squareness.

D and D1 are overall diagonal dimensions. W and W1 are overall lengths of cross rods at opposite ends of panels.

